

FIGURE 81e-51 Burkitt's lymphoma in a lymph node. Burkitt's lymphoma with starry-sky appearance. The lighter areas are macrophages attempting to clear dead cells.

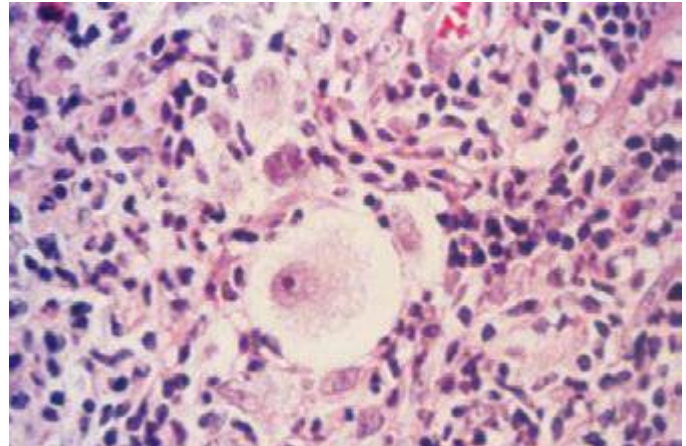


FIGURE 81e-54 Lacunar cell; Reed-Sternberg cell variant in nodular sclerosing Hodgkin's disease. High-power view of single mononuclear lacunar cell with retracted cytoplasm in a patient with nodular sclerosing Hodgkin's disease.

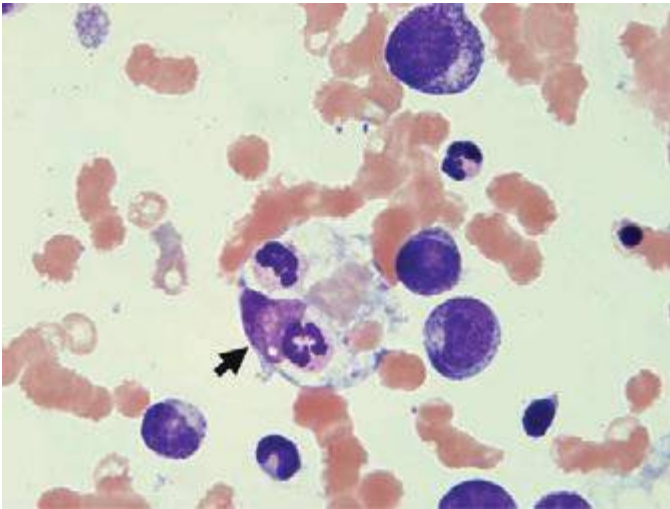


FIGURE 81e-52 Erythrophagocytosis accompanying aggressive lymphoma. The central macrophage is ingesting red cells, neutrophils, and platelets. (Courtesy of Dr. Kiyomi Tsukimori, Kyushu University, Fukuoka, Japan.)

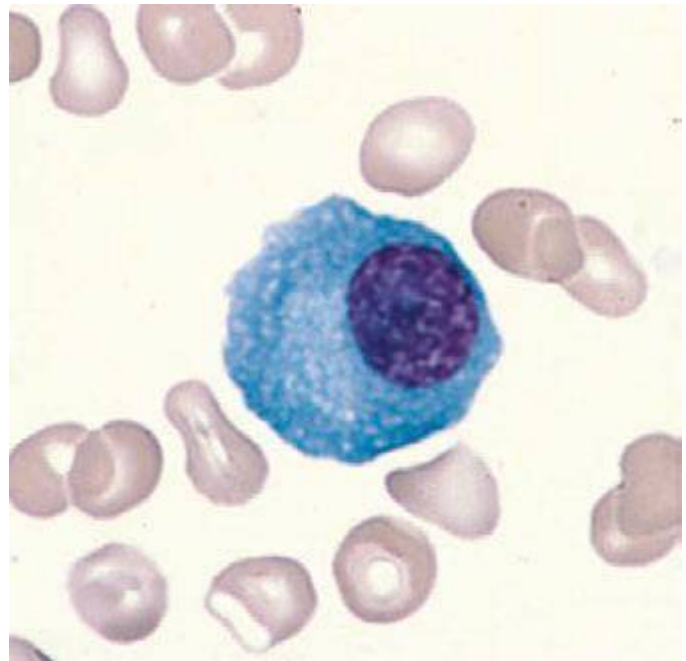


FIGURE 81e-55 Normal plasma cell.

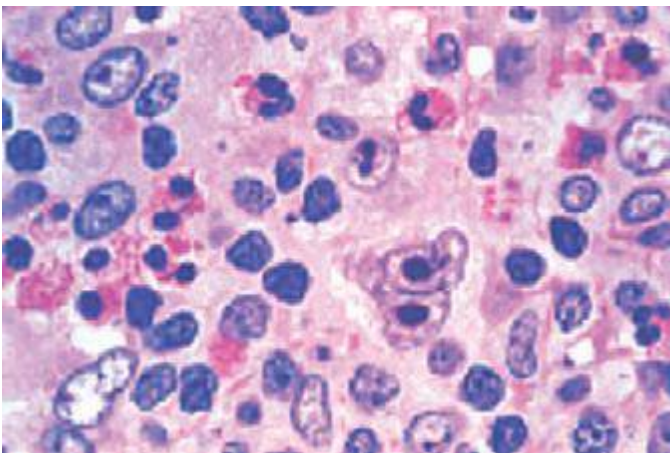


FIGURE 81e-53 Hodgkin's disease. A Reed-Sternberg cell is present near the center of the field; a large cell with a bilobed nucleus and prominent nucleoli giving an "owl's eyes" appearance. The majority of the cells are normal lymphocytes, neutrophils, and eosinophils that form a pleiomorphic cellular infiltrate.

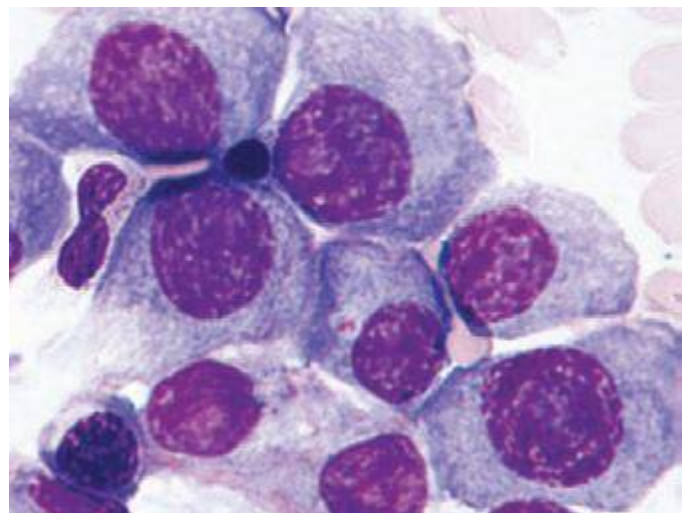


FIGURE 81e-56 Multiple myeloma.