

FIGURE 81e-45 Chronic myeloid leukemia in the peripheral blood.

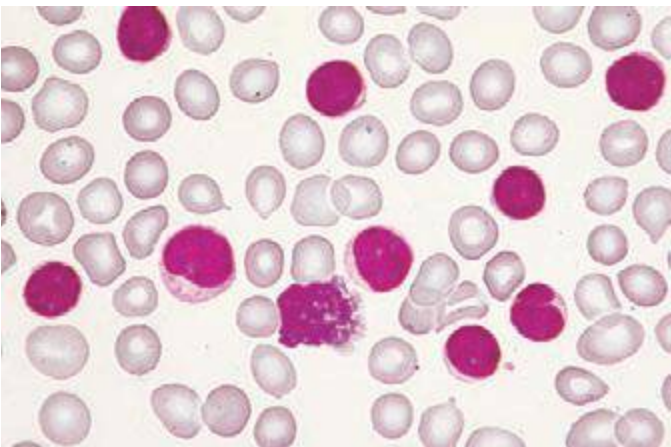


FIGURE 81e-46 Chronic lymphoid leukemia in the peripheral blood.

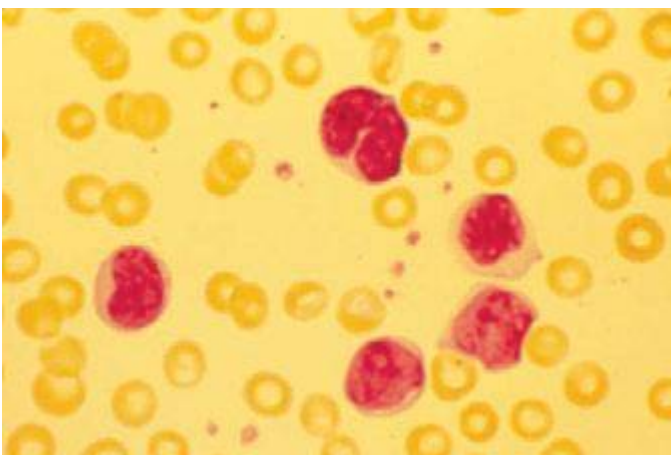


FIGURE 81e-47 Sézary's syndrome. Lymphocytes with frequently convoluted nuclei (Sézary cells) in a patient with advanced mycosis fungoides.

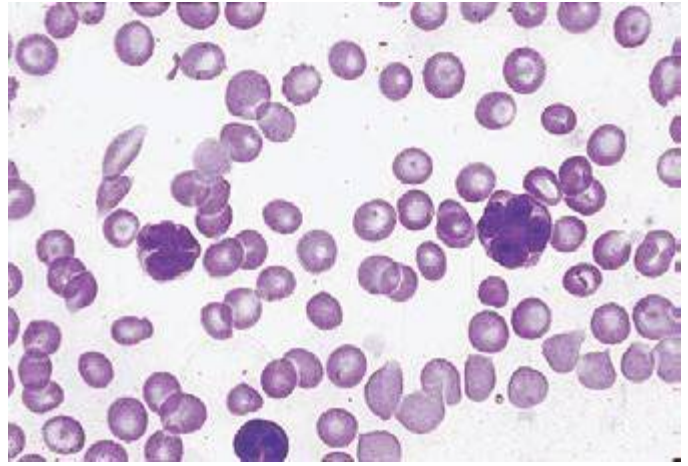


FIGURE 81e-48 Adult T cell leukemia. Peripheral blood smear showing leukemia cells with typical "flower-shaped" nucleus.

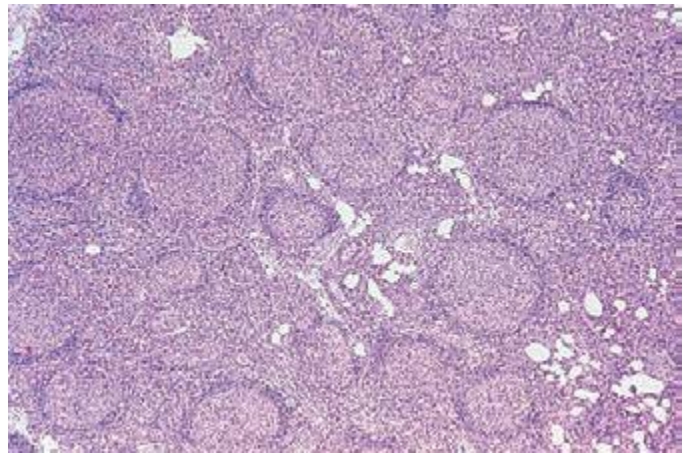


FIGURE 81e-49 Follicular lymphoma in a lymph node. The normal nodal architecture is effaced by nodular expansions of tumor cells. Nodules vary in size and contain predominantly small lymphocytes with cleaved nuclei along with variable numbers of larger cells with vesicular chromatin and prominent nucleoli.

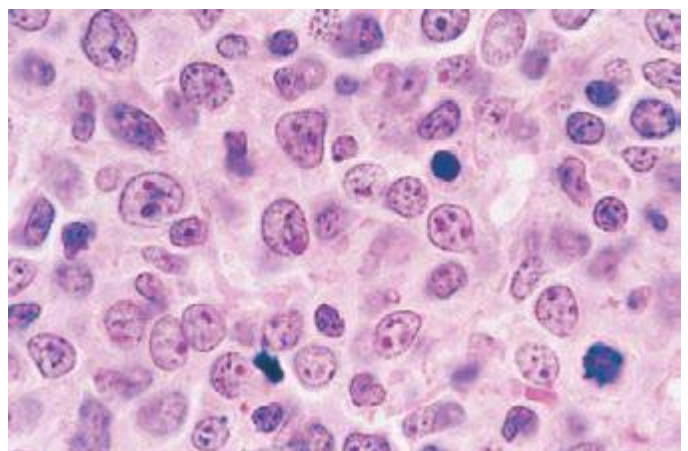


FIGURE 81e-50 Diffuse large B cell lymphoma in a lymph node. The neoplastic cells are heterogeneous but predominantly large cells with vesicular chromatin and prominent nucleoli.