

FIGURE 62e-32 Acute phosphate nephropathy. There is extensive acute tubular injury with intratubular nonpolarizable calcium phosphate crystals. (ABF/Vanderbilt Collection.)



FIGURE 62e-35 Coarse granular cast. (ABF/Vanderbilt Collection.)

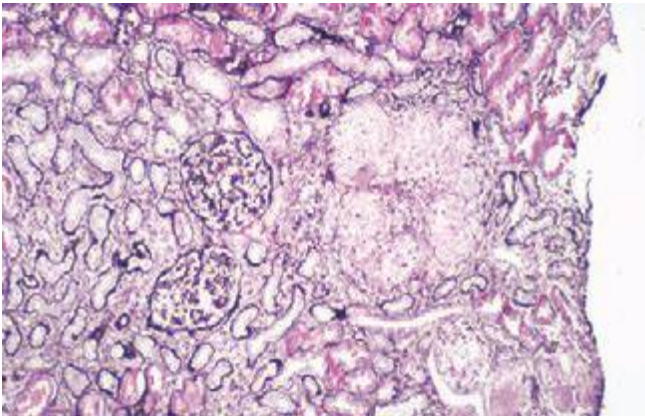


FIGURE 62e-33 Sarcoidosis. There is chronic interstitial nephritis with numerous, confluent, nonnecrotizing granulomas. The glomeruli are unremarkable, but there is moderate tubular atrophy and interstitial fibrosis. (ABF/Vanderbilt Collection.)

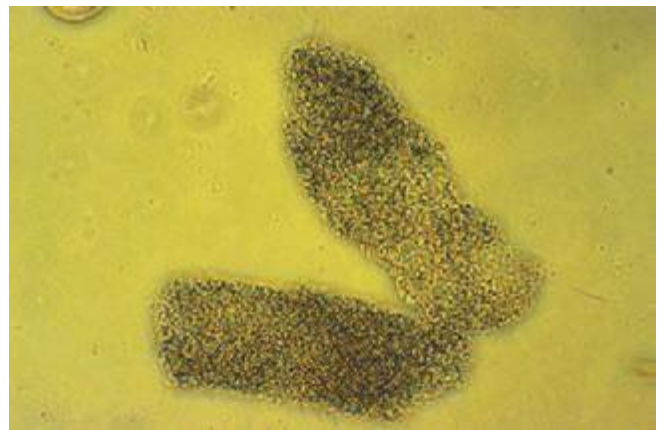


FIGURE 62e-36 Fine granular casts. (ABF/Vanderbilt Collection.)



FIGURE 62e-34 Hyaline cast. (ABF/Vanderbilt Collection.)



FIGURE 62e-37 Red blood cell cast. (ABF/Vanderbilt Collection.)