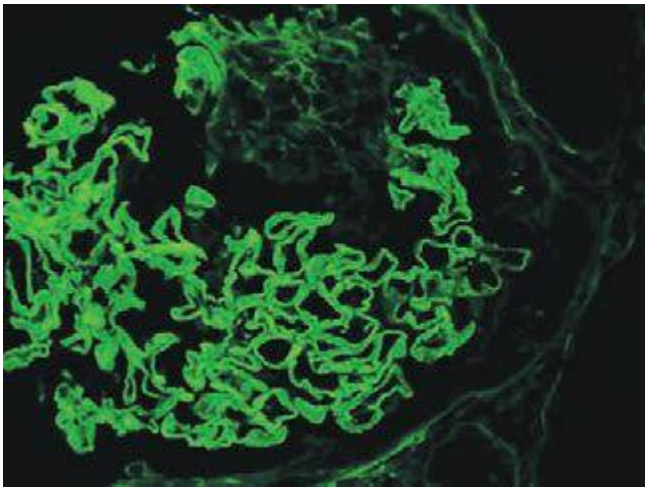
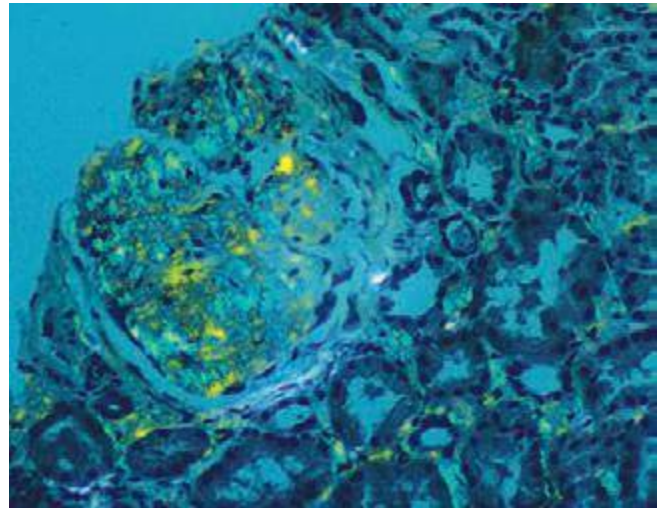


A

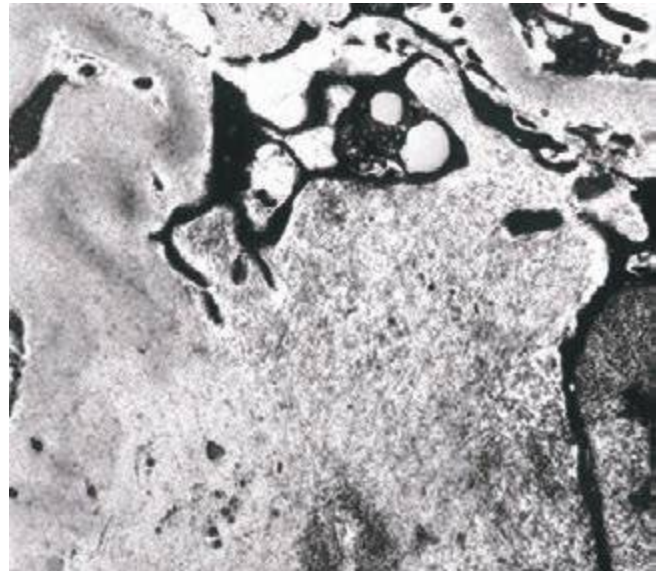


B

**FIGURE 62e-17** Anti-glomerular basement membrane antibody-mediated glomerulonephritis. There is segmental necrosis with a break of the glomerular basement membrane (*arrow*) and a cellular crescent (**A**), and immunofluorescence for IgG shows linear staining of the glomerular basement membrane with a small crescent at ~1 o'clock (**B**). (ABF/Vanderbilt Collection.)



A



B

**FIGURE 62e-18** Amyloidosis. Amyloidosis shows amorphous, acellular expansion of the mesangium, with material often also infiltrating glomerular basement membranes, vessels, and the interstitium, with apple-green birefringence by polarized Congo red stain (**A**). The deposits are composed of randomly organized 9- to 11-nm fibrils by electron microscopy (**B**). (ABF/Vanderbilt Collection.)