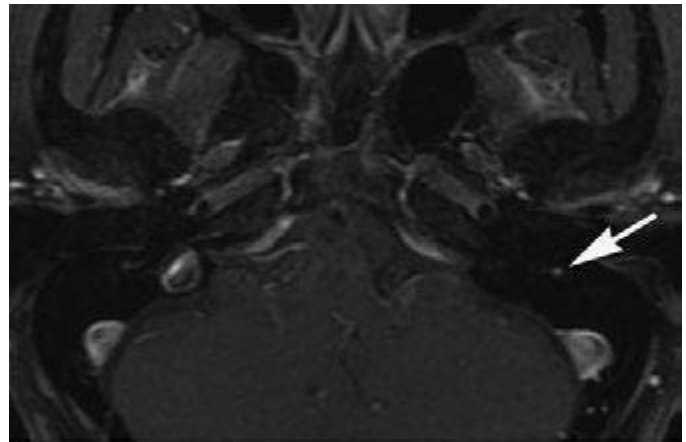
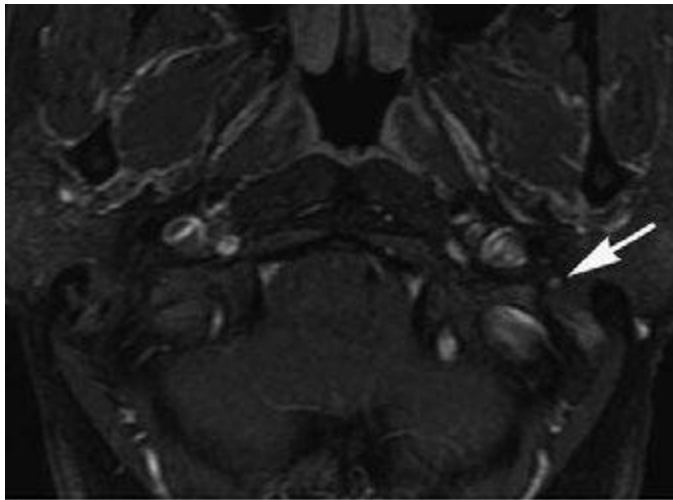


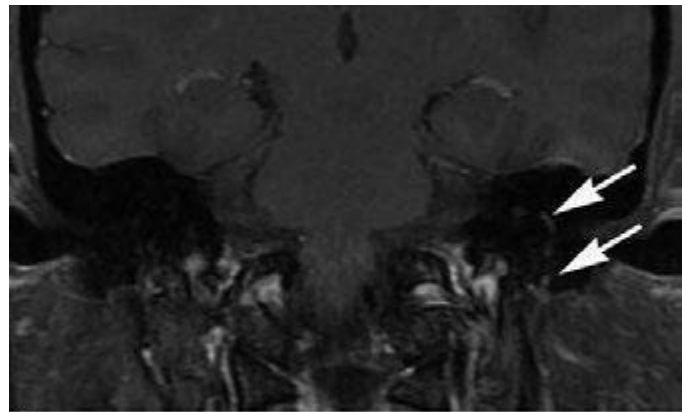
A



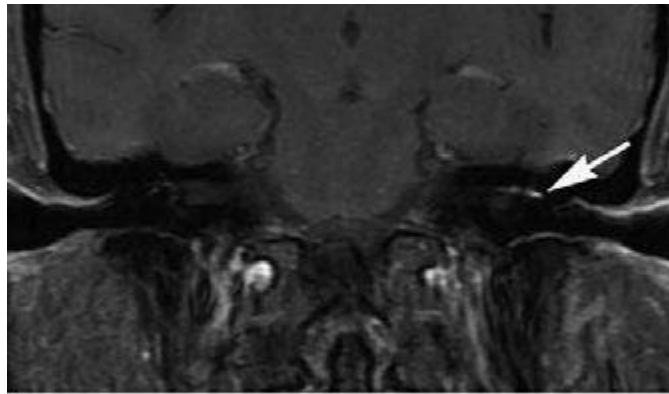
B



C



D



E

FIGURE 441e-23 Bell's palsy (Chap. 455). Axial T1-weighted images postgadolinium with fat suppression (**A–C**) demonstrate diffuse smooth linear enhancement along the left facial nerve, involving the second and third segments (genu, tympanic, and mastoid) within the temporal bone (*arrows*). Note that there is no evidence of a mass lesion. A potential pitfall for facial nerve enhancement in the stylomastoid foramen is the enhancement of the stylomastoid artery that enters the foramen and supplies the tympanic cavity, the tympanic antrum, mastoid cells, and the semicircular canals. Coronal T1-weighted images postgadolinium with fat suppression (**D, E**) demonstrate the course of the enhancing facial nerve (*arrows*). Although these findings are highly suggestive of Bell's palsy, the diagnosis is established on clinical grounds.