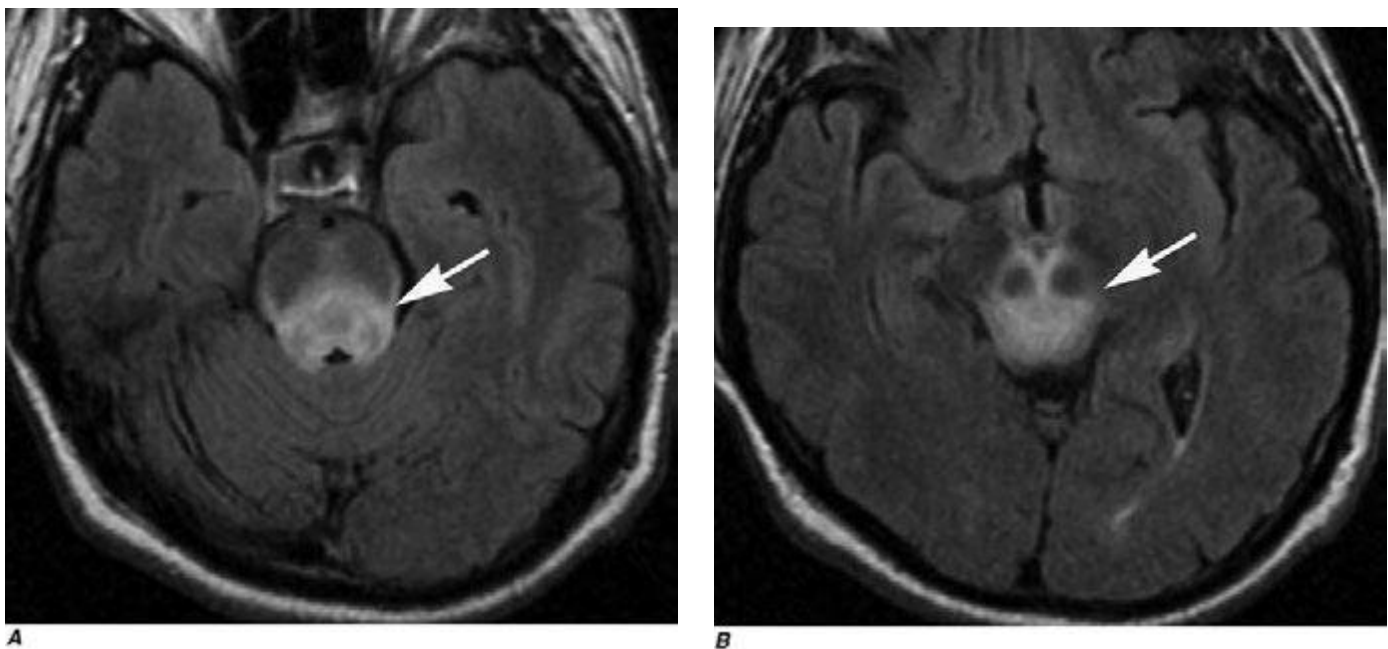


**FIGURE 441e-12 Neurosarcoid (Chap. 390): Case II.** Axial (*A, B*) and sagittal (*C*) T1-weighted images postgadolinium with fat suppression demonstrate a homogeneously enhancing mass involving the hypothalamus and the pituitary stalk (*arrows*).



**FIGURE 441e-13 Neurosarcoid (Chap. 390): Case III.** Axial FLAIR images (*A–E*) demonstrate abnormal high signal and slight expansion in the midbrain, dorsal pons, and pineal region (*arrows*) without significant mass effect. Sagittal T1-weighted images postgadolinium (*F*) with fat suppression demonstrate abnormal enhancement in the midbrain, dorsal pons, and pineal region (*arrows*).