

A



B



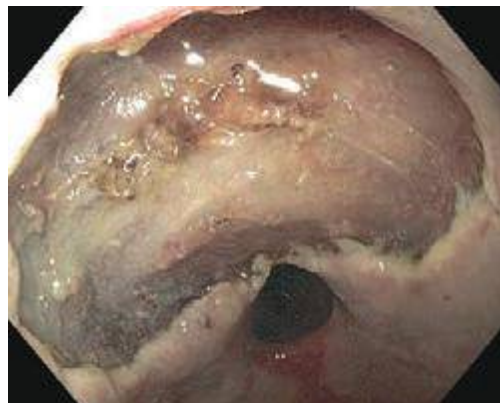
C



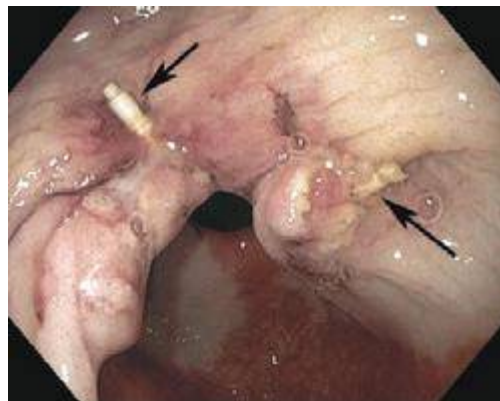
D



A



B



C



D

**FIGURE 345-18** Endoscopic submucosal dissection. **A.** Large flat distal rectal adenoma with central lobulation. **B.** Marking the periphery of the lesion with coagulation dots. **C.** Rectal defect following endoscopic submucosal dissection. **D.** Specimen resected en bloc.

**FIGURE 345-19** Closure of large defect using an endoscopic suturing device. **A.** Ulcerated inflammatory fibroid polyp in the antrum. **B.** Large defect following endoscopic submucosal dissection of the lesion. **C.** Closure of the defect using endoscopic sutures (arrows). **D.** Resected specimen.