

FIGURE 308e-45 Solitary pulmonary nodule on the right (*red arrow*) with a spiculated pattern concerning for lung cancer. Note also that the patient is status post left upper lobectomy with resultant volume loss and associated effusion (*black arrow*).

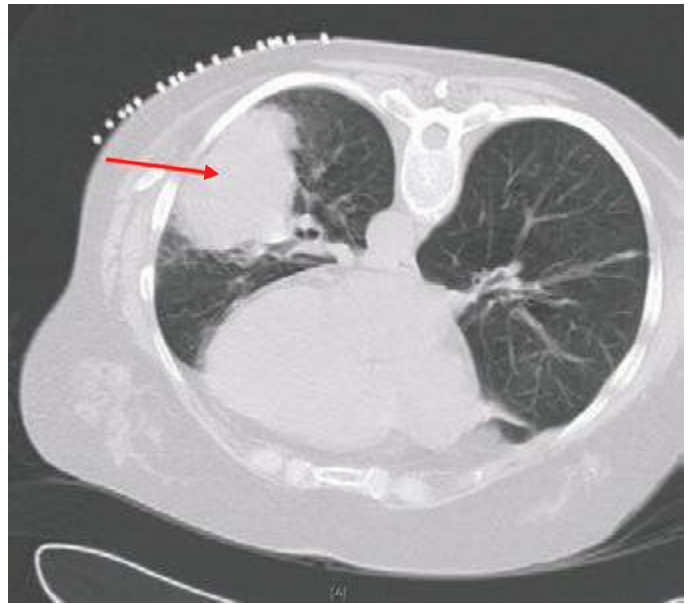


FIGURE 308e-47 Left lower lobe lung mass (*red arrow*) abutting pleura. Biopsy demonstrated small-cell lung cancer.

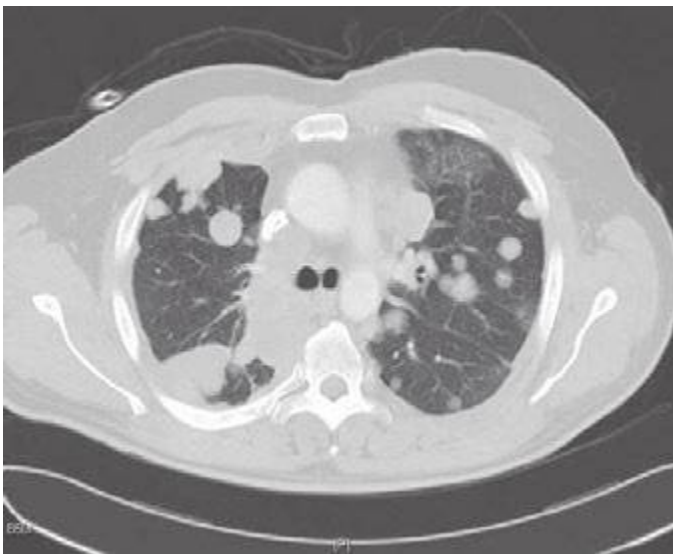


FIGURE 308e-46 Metastatic sarcoma. Note the multiple, well-circumscribed nodules of different size.



FIGURE 308e-48 CT scan of soft tissue mass encircling the trachea (*red arrow*) and invading tracheal lumen. Biopsy demonstrated adenoid cystic carcinoma (cylindroma).