

R

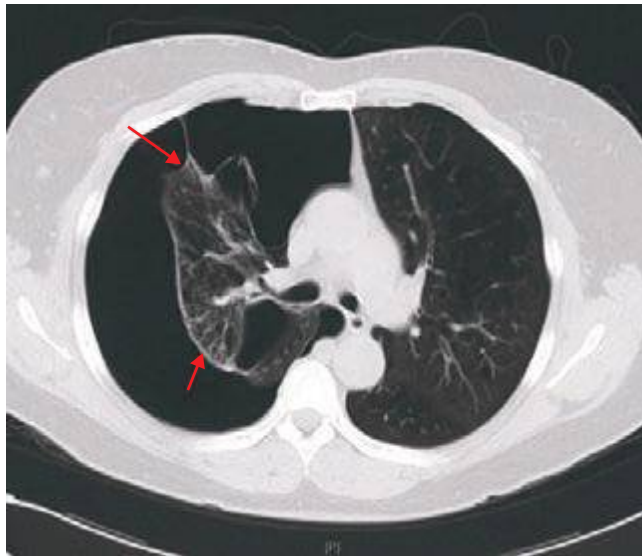


FIGURE 308e-40 CT scan of large right-sided pneumothorax. Note significant collapse of right lung with adhesion to anterior chest wall. Pleural reflection highlighted with *red arrows*. The patient has severe underlying emphysema.

R



FIGURE 308e-41 Small right pleural effusion (*red arrows* highlight blunted right costophrenic angles) with associated pleural thickening. Note fluid in the major fissure (*black arrow*) visible on the lateral film as well as the meniscus of the right pleural effusion.

R

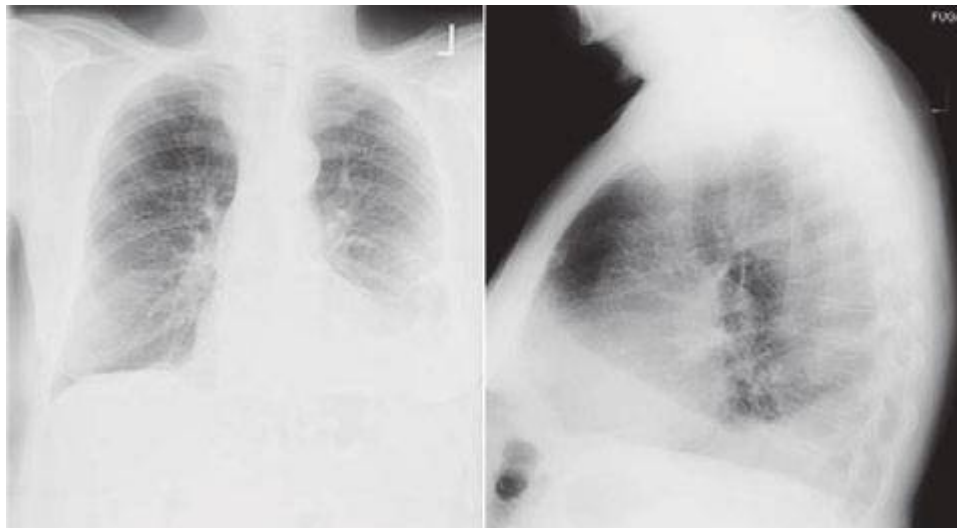


FIGURE 308e-42 Left pleural effusion with clear meniscus seen on both PA and lateral chest radiographs.