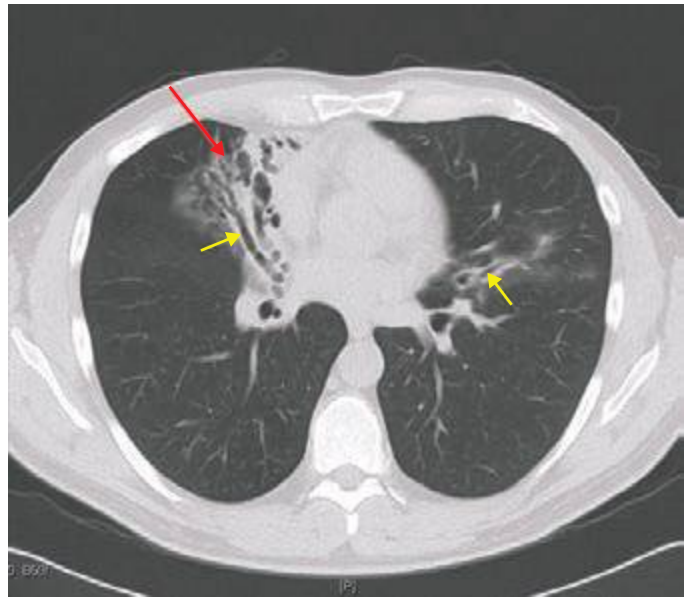
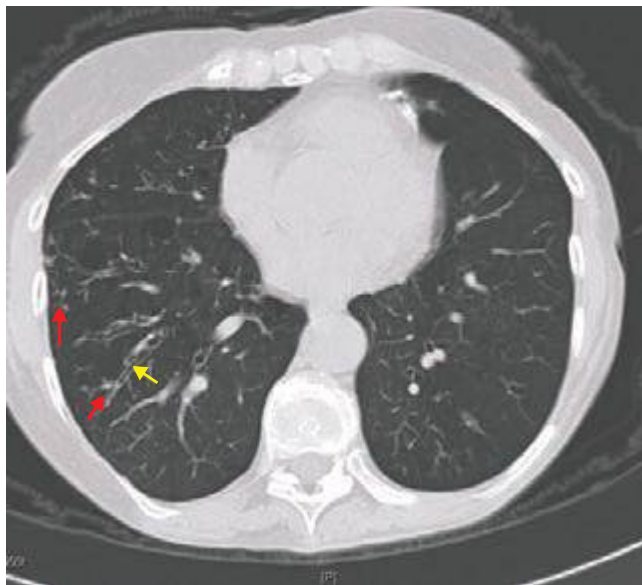


**FIGURE 308e-34** CT scan of diffuse, cystic bronchiectasis (*red arrows*) in a patient with cystic fibrosis.



**FIGURE 308e-35** CT scan of focal right middle lobe and lingular bronchiectasis (*yellow arrows*). Note that there is near total collapse of the right middle lobe (*red arrow*).



**FIGURE 308e-36** "Tree in bud" opacities (*red arrows*) and bronchiectasis (*yellow arrow*) consistent with atypical mycobacterial infection. "Tree in bud" refers to small nodules clustered around the centrilobular arteries as well as increased prominence of the centrilobular branching. These findings are consistent with bronchiolitis.