

FIGURE 308e-17 Mild congestive heart failure. Note the Kerley B lines (*black arrow*) and perivascular cuffing (*yellow arrow*) as well as the pulmonary vascular congestion (*red arrow*).



FIGURE 308e-18 Pulmonary edema. Note indistinct vasculature, perihilar opacities, and peripheral interstitial reticular opacities. Although this is an anteroposterior film making cardiac size more difficult to assess, the cardiac silhouette still appears enlarged.

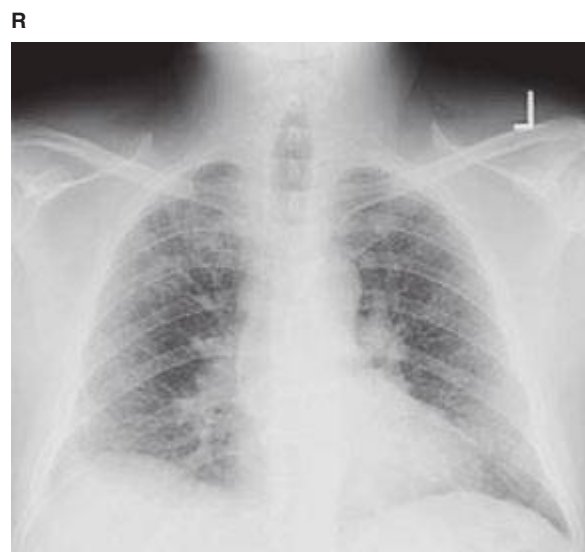


FIGURE 308e-19 Chest radiograph demonstrates reticular nodular opacities bilaterally with small lung volumes consistent with usual interstitial pneumonitis (UIP) on pathology. Clinically, UIP is used interchangeably with idiopathic pulmonary fibrosis (IPF).

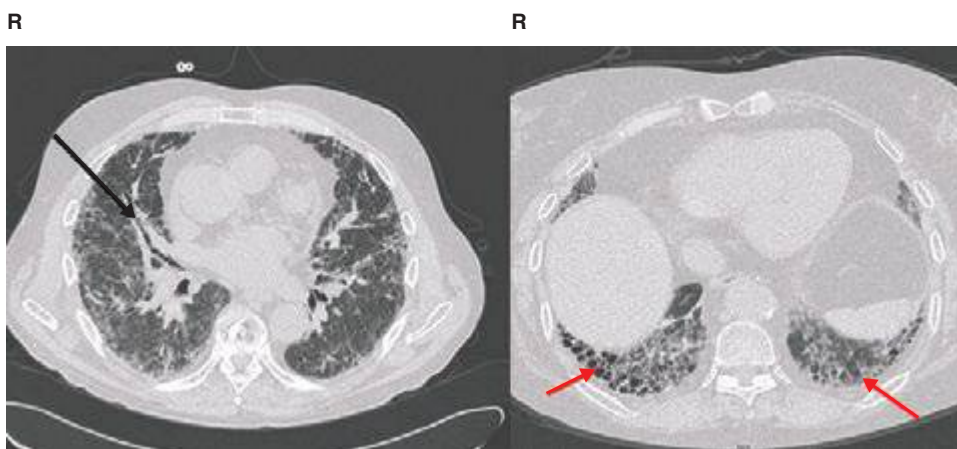


FIGURE 308e-20 CT scan of usual interstitial pneumonitis (UIP), also known as idiopathic pulmonary fibrosis (IPF). Classic findings include traction bronchiectasis (*black arrow*) and honeycombing (*red arrows*). Note subpleural, basilar predominance of the honeycombing.