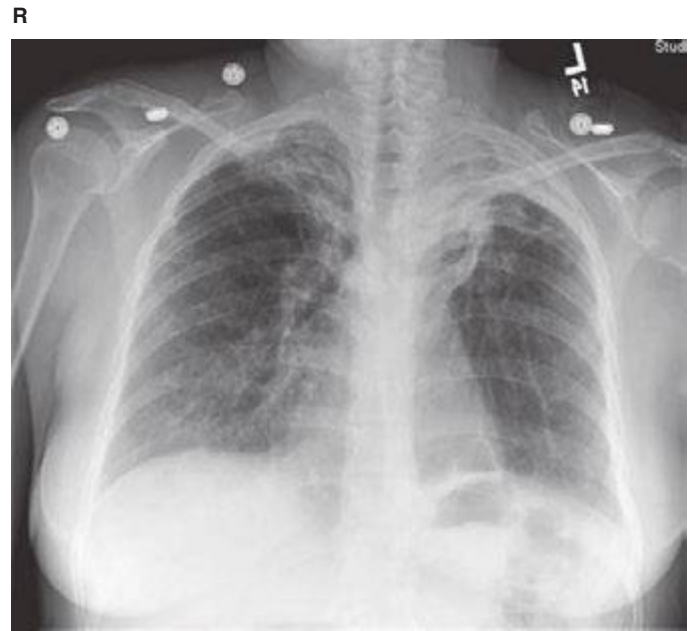
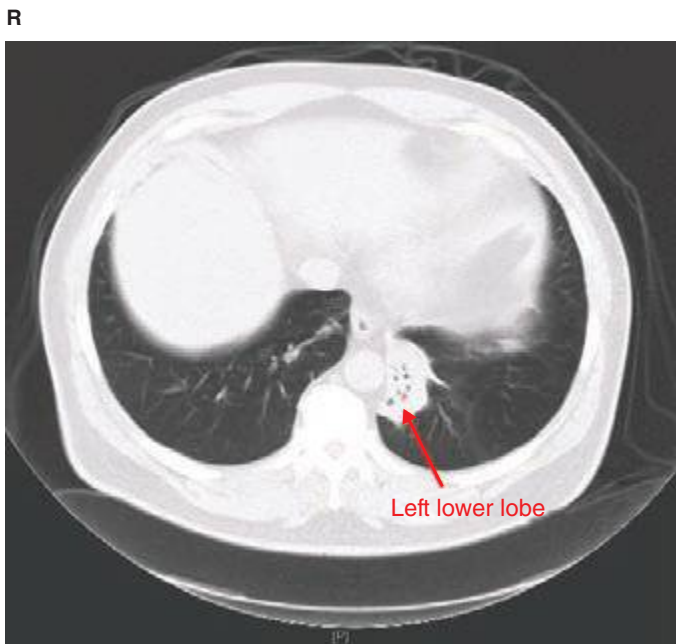


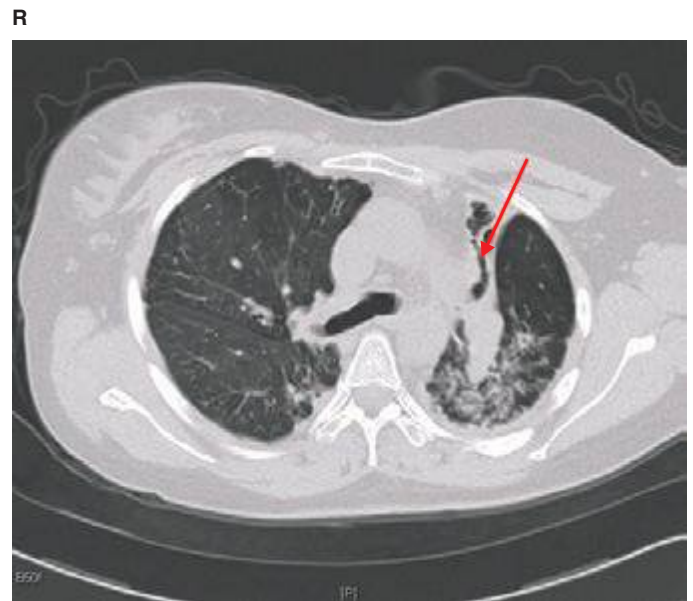
**FIGURE 308e-3** CT scan demonstrating left upper lobe collapse. The patient was found to have an endobronchial lesion (not visible on the CT scan) resulting in this finding. The superior vena cava (*black arrow*) is partially opacified by intravenous contrast.



**FIGURE 308e-5** Left upper lobe scarring with hilar retraction with less prominent scarring in right upper lobe as well. Findings consistent with previous tuberculosis infection in an immigrant from Ecuador.



**FIGURE 308e-4** CT scan revealing chronic left lower lobe collapse. Note dramatic volume loss with minimal aeration. There is subtle mediastinal shift to the left.



**FIGURE 308e-6** Apical scarring, traction bronchiectasis (*red arrow*), and decreased lung volume consistent with previous tuberculosis infection. Findings most significant in left lung.