



FIGURE 25e-42 Fulminant meningococemia with extensive angular purpuric patches. (Courtesy of Stephen E. Gellis, MD; with permission.)



FIGURE 25e-45 Palpable purpuric papules on the lower leg are seen in this patient with cutaneous small-vessel hypersensitivity vasculitis. (Reprinted from K Wolff, RA Johnson: *Color Atlas and Synopsis of Clinical Dermatology*, 6th ed. New York, McGraw-Hill, 2009.)



FIGURE 25e-43 Erythematous papular lesions are seen on the leg of this patient with chronic meningococemia (arrow indicates a lesion).



FIGURE 25e-46 The thumb of a patient with a necrotic ulcer of tularemia. (Courtesy of the Centers for Disease Control and Prevention.)

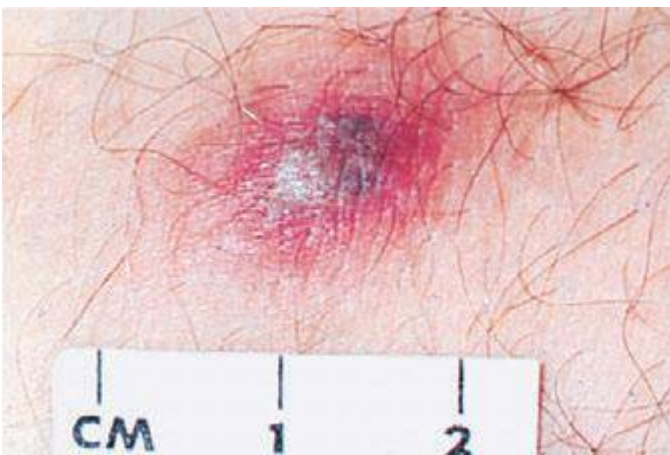


FIGURE 25e-44 Disseminated gonococemia in the skin is seen as hemorrhagic papules and pustules with purpuric centers in a centrifugal distribution. (Courtesy of Daniel M. Musher, MD; with permission.)



FIGURE 25e-47 This 50-year-old man developed high fever and massive inguinal lymphadenopathy after a small ulcer healed on his foot. Tularemia was diagnosed. (Courtesy of Lindsey Baden, MD; with permission.)