



FIGURE 25e-14 Impetigo is a superficial group A streptococcal or *Staphylococcus aureus* infection consisting of honey-colored crusts and erythematous weeping erosions. (Reprinted from K Wolff, RA Johnson: *Fitzpatrick's Color Atlas and Synopsis of Clinical Dermatology*, 6th ed. New York, McGraw-Hill, 2009.)



FIGURE 25e-15 Erysipelas is a group A streptococcal infection of the superficial dermis and consists of well-demarcated, erythematous, edematous, warm plaques. (Reprinted from K Wolff, RA Johnson, AP Saavedra: *Fitzpatrick's Color Atlas and Synopsis of Clinical Dermatology*, 7th ed. New York, McGraw-Hill, 2013.)

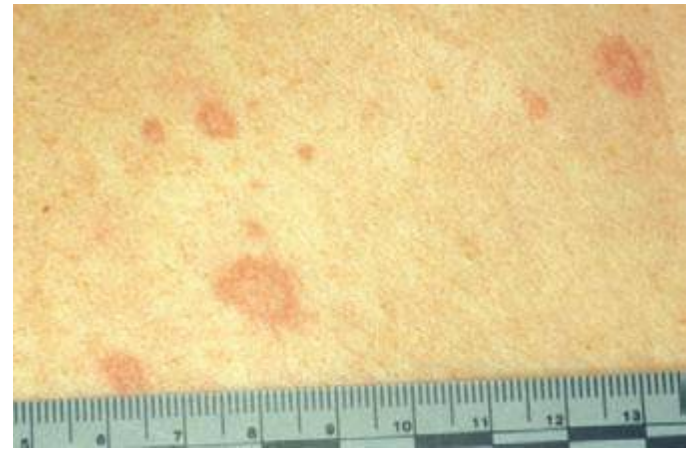


FIGURE 25e-16 **Top:** Petechial lesions of Rocky Mountain spotted fever on the lower legs and soles of a young, otherwise healthy patient. **Bottom:** Close-up of lesions from the same patient. (Courtesy of Lindsey Baden, MD; with permission.)



FIGURE 25e-17 Primary syphilis with firm, nontender chancres. (Courtesy of M. Rein and the Centers for Disease Control and Prevention.)