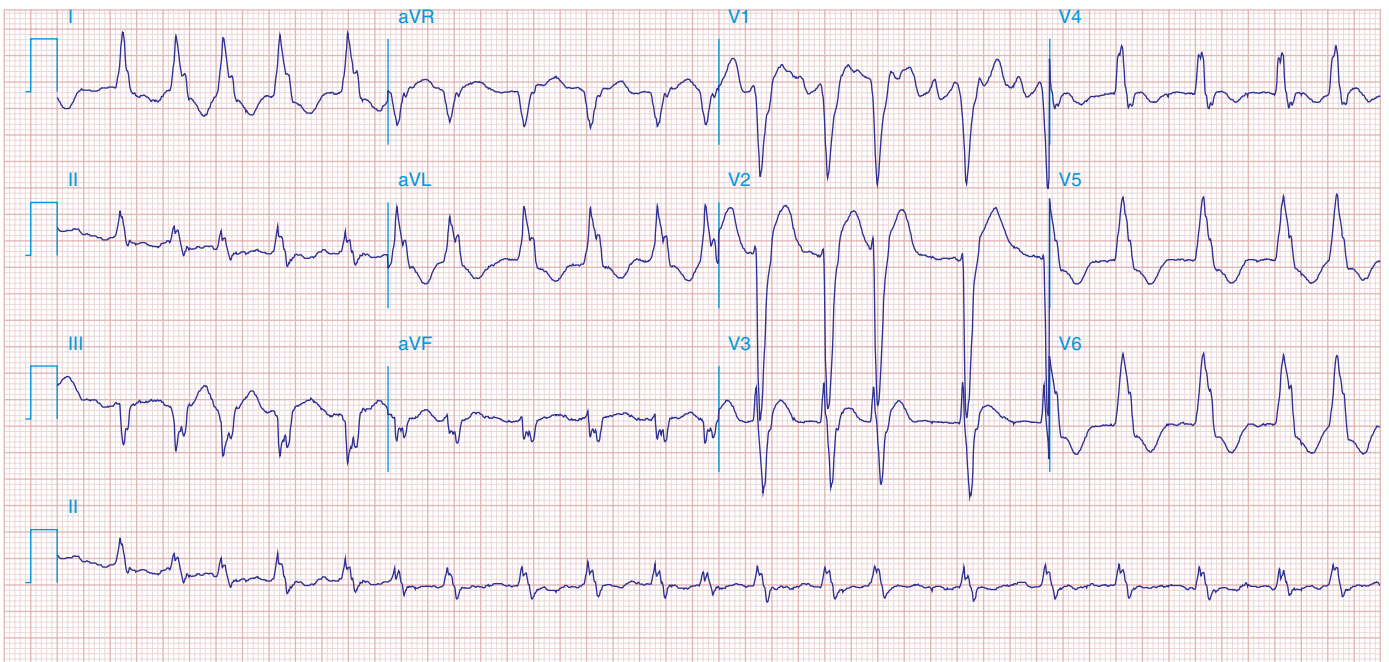


**FIGURE 278e-16 Wide complex tachycardia.** Atrial flutter with 2:1 AV conduction (block) and LBBB, not to be mistaken for VT. Typical atrial flutter activity is clearly present in lead II, at a cycle rate of about 320/min, yielding an effective ventricular rate of about 160/min.



**FIGURE 278e-17 AF with LBBB.** The ventricular rhythm is erratically irregular. Coarse fibrillatory waves are best seen in lead V<sub>1</sub>, with a typical LBBB pattern.