

FIGURE 278e-10 Atrial tachycardia with atrial rate of about 200/min (note lead V_1), 2:1 AV block (conduction), and one premature ventricular complex. Also present: LVH with intraventricular conduction delay and slow precordial R-wave progression (cannot rule out prior anterior MI).

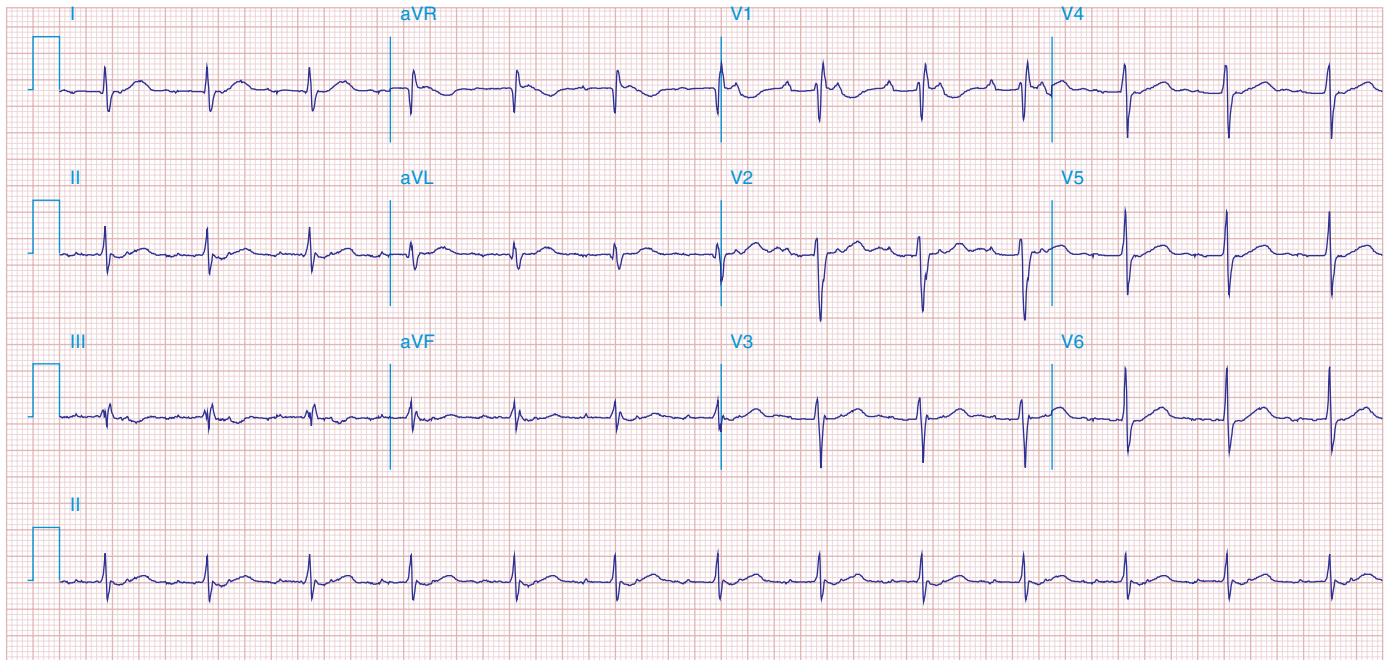


FIGURE 278e-11 Atrial tachycardia with 2:1 block. P-wave rate is about 150/min, with ventricular (QRS) rate of about 75/min. The non-conducted ("extra") P waves just after the QRS complex are best seen in lead V_1 . Also, note incomplete RBBB and borderline QT prolongation.