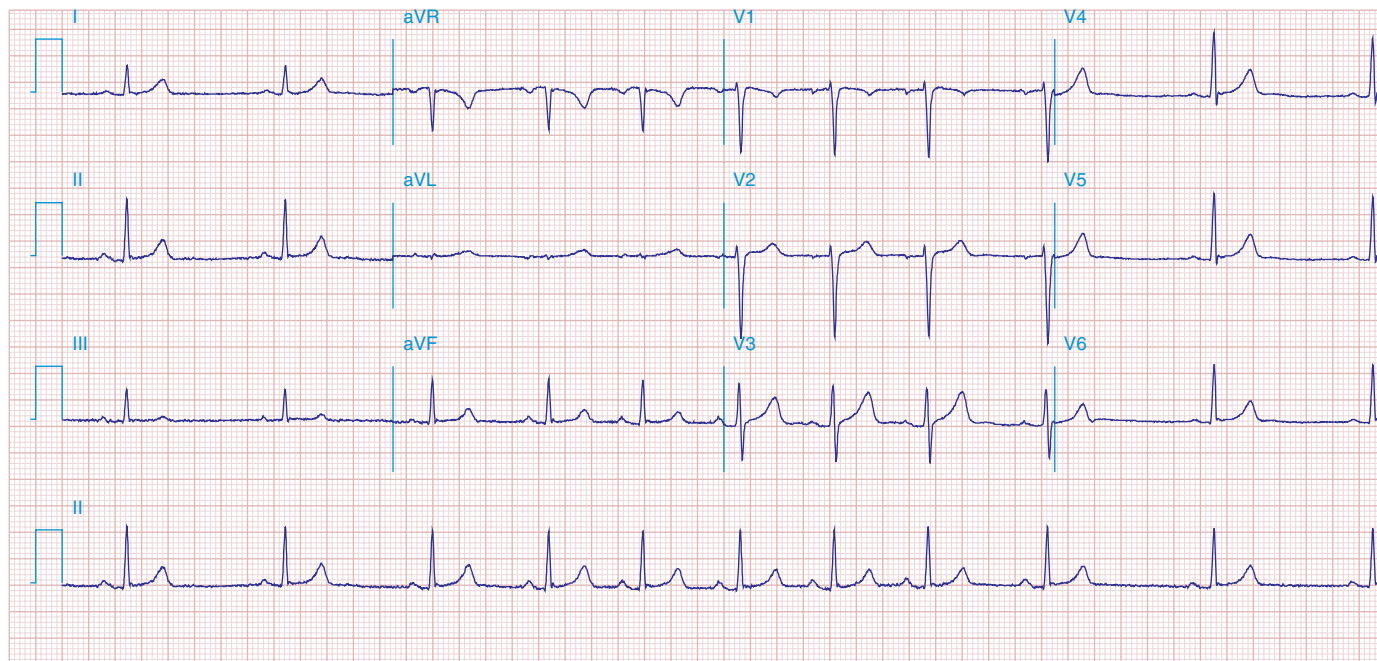


The electrocardiograms in this atlas supplement those illustrated in [Chaps. 274 and 276](#). The interpretations emphasize findings of specific teaching value.

All of the figures are adapted from cases in ECG Wave-Maven, Copyright 2003, Beth Israel Deaconess Medical Center, <http://ecg.bidmc.harvard.edu>.

The abbreviations used in this chapter are as follows:

- AF—atrial fibrillation
- AV—atrioventricular
- LBBB—left bundle branch block
- LV—left ventricular
- LVH—left ventricular hypertrophy
- MI—myocardial infarction
- NSR—normal sinus rhythm
- RBBB—right bundle branch block
- VT—ventricular tachycardia
- WPW—Wolff-Parkinson-White



**FIGURE 278e-1** Respiratory sinus arrhythmia, a physiologic finding in a healthy young adult. The rate of the sinus pacemaker is relatively slow at the beginning of the strip during expiration, then accelerates during inspiration and slows again with expiration. Changes are due to cardiac vagal tone modulation with breathing.