

FIGURE 269e-30 SR with first-degree AV “block” (PR interval = 0.24 s) and complete LBBB.

MISCELLANEOUS

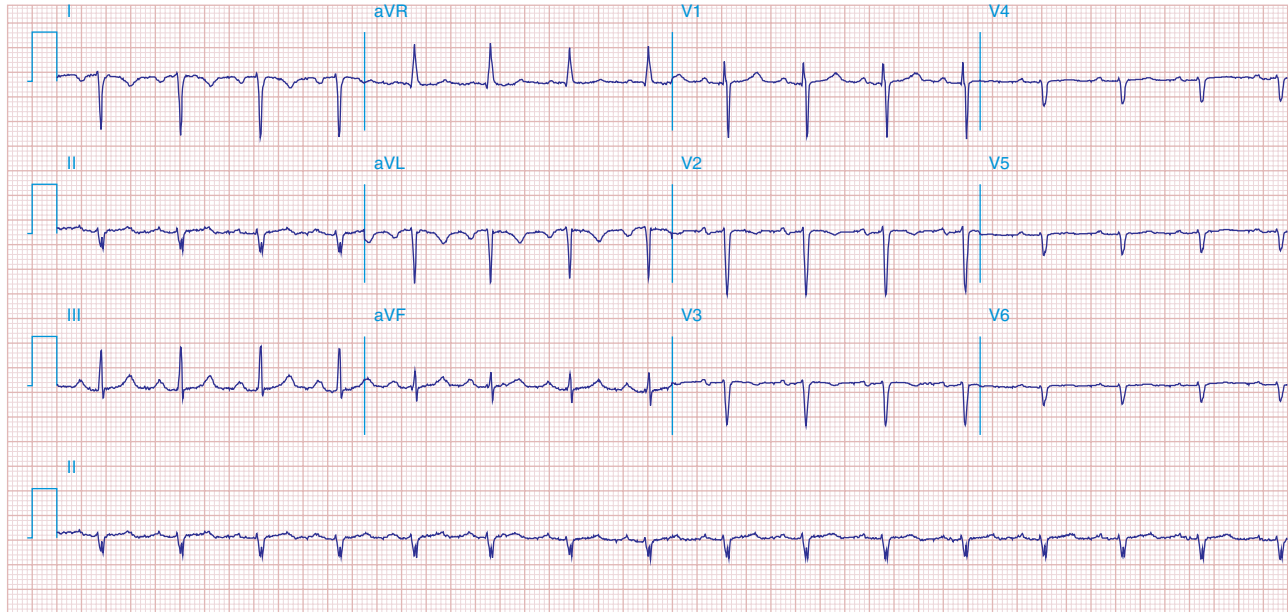


FIGURE 269e-31 Dextrocardia with: (1) inverted P waves in I and aVL; (2) negative QRS complex and T wave in I; and (3) progressively decreasing voltage across the precordium.