

FIGURE 269e-28 Left atrial abnormality and LVH in a patient with long-standing hypertension.

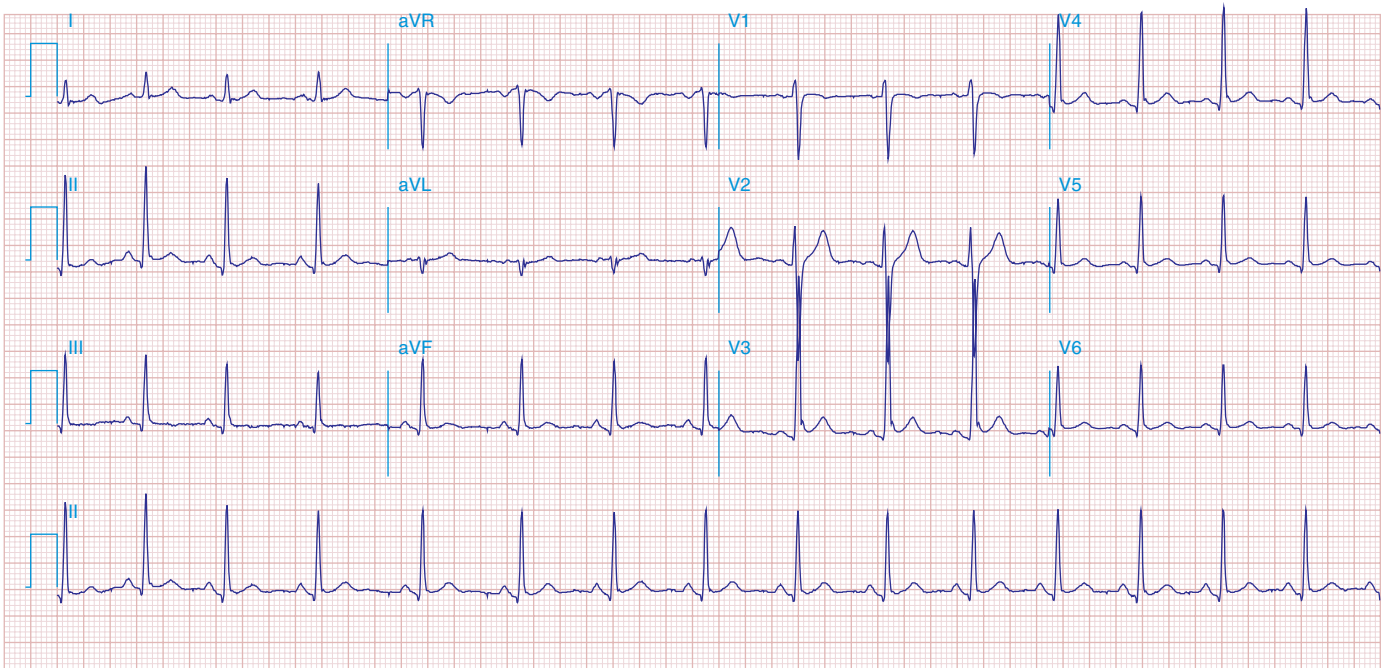


FIGURE 269e-29 Normal variant ST-segment elevations in a healthy 21-year-old male (commonly referred to as *benign early repolarization pattern*). ST elevations exhibit upward concavity and are most apparent in V_3 and V_4 , and less than 1 mm in the limb leads. Precordial QRS voltages are prominent, but within normal limits for a young adult. No evidence of left atrial abnormality or ST depression/T-wave inversions to go along with LVH.