

FIGURE 269e-24 Prominent U waves (II, III, and V_4 - V_6) with ventricular repolarization prolongation in a patient with severe hypokalemia.

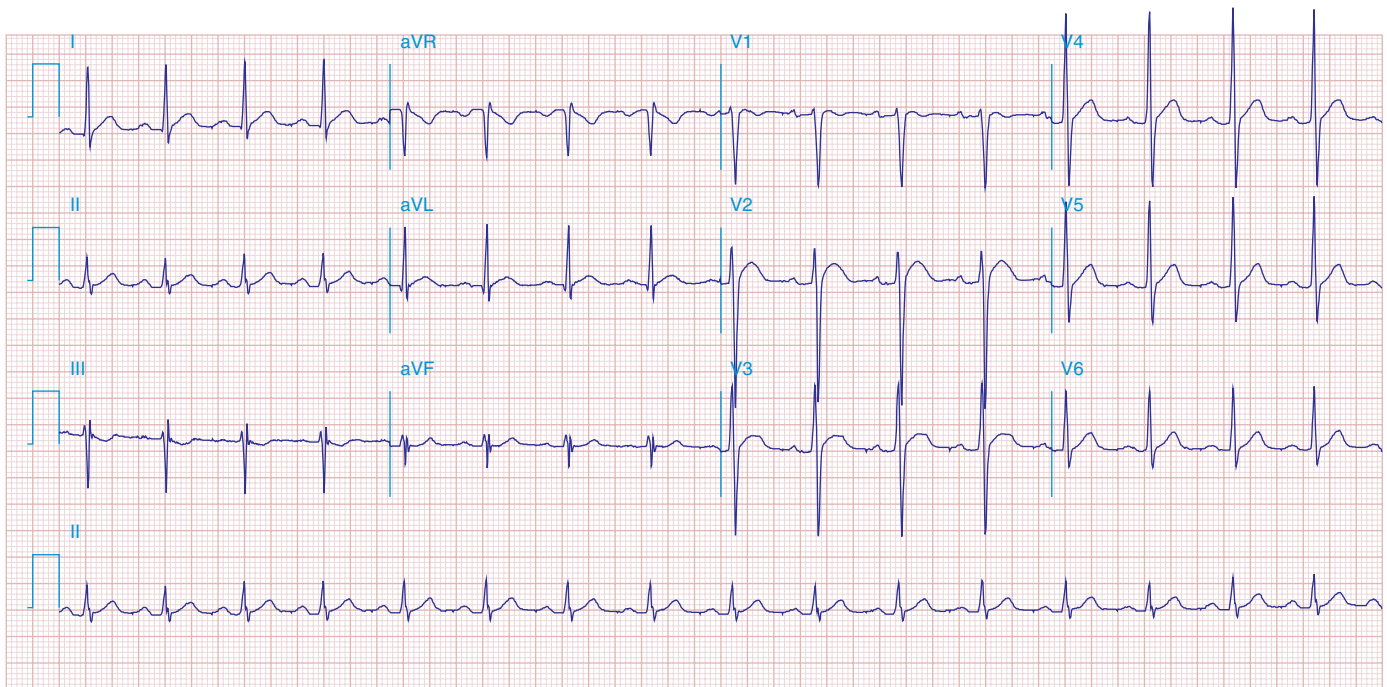


FIGURE 269e-25 Abbreviated ST segment such that the T wave looks like it takes off directly from QRS in some leads (I, V_4 , aVL, and V_6) in a patient with severe hypercalcemia. Note also high takeoff of ST segment in V_2 / V_3 simulating acute ischemia.