

FIGURE 269e-20 Sinus tachycardia with S1Q3T3 pattern (T-wave inversion in III), incomplete RBBB, and right precordial T-wave inversions consistent with acute RV overload in a patient with pulmonary emboli.

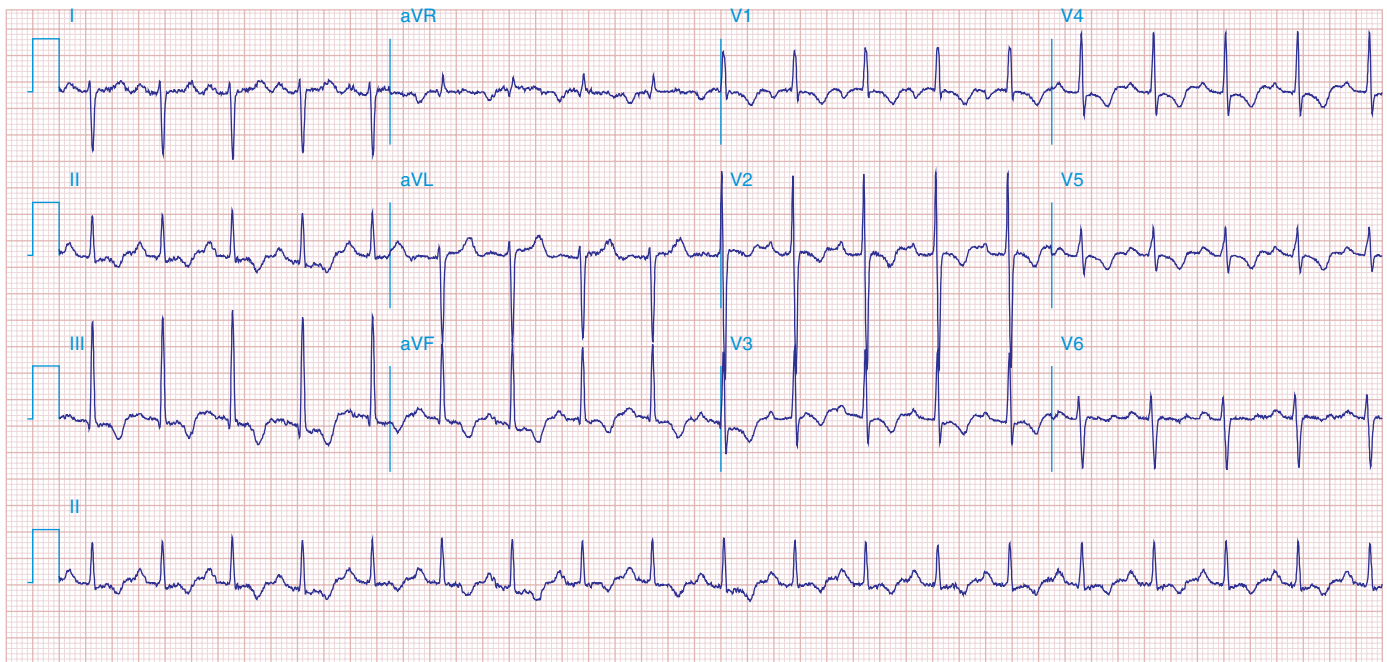


FIGURE 269e-21 Sinus tachycardia, right-axis deviation, RVH with tall R in V_1 and deep S in V_6 , and inverted T waves in II, III, aVF, and V_1 - V_5 in a patient with atrial septal defect and severe pulmonary hypertension.