

FIGURE 269e-12 SR with RBBB (broad terminal R wave in V₁) and left anterior fascicular block (hemiblock) and pathologic anterior Q waves in V₁-V₃. Patient had severe multivessel coronary artery disease, with echocardiogram showing septal dyskinesis and apical akinesis.

PERICARDITIS

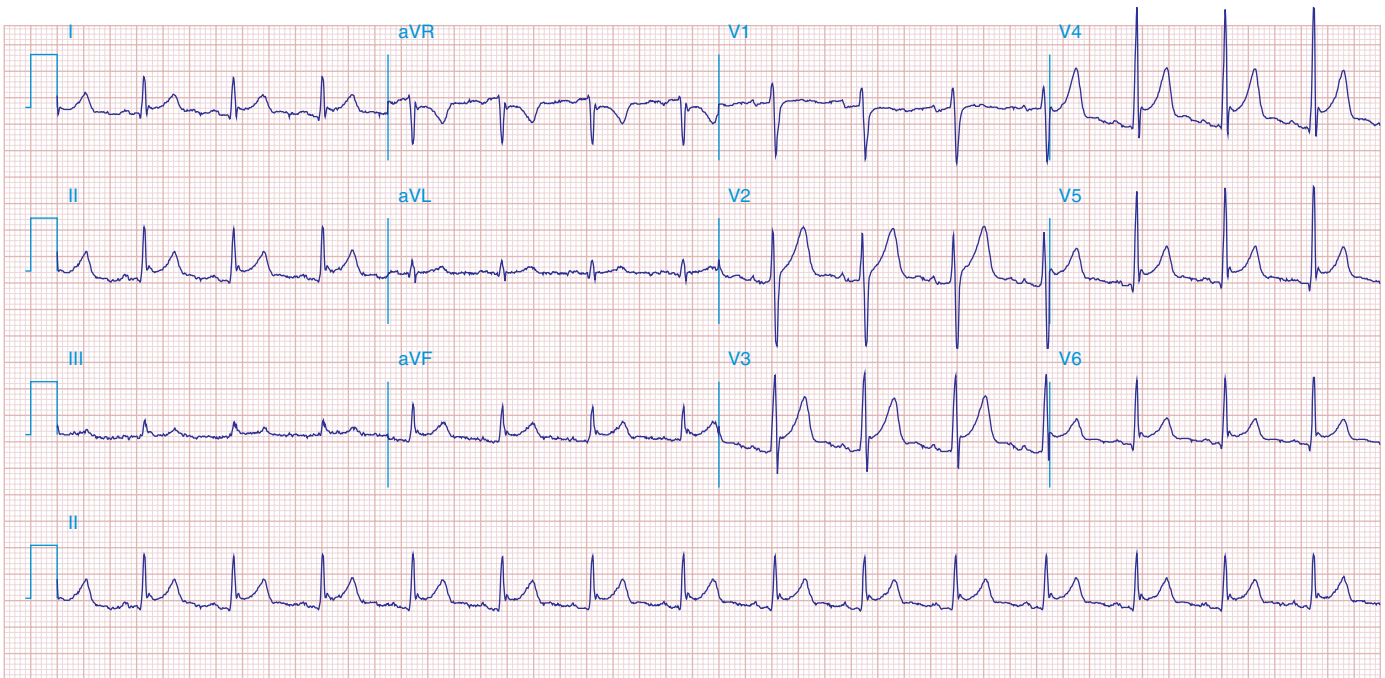


FIGURE 269e-13 Acute pericarditis with diffuse ST elevations in I, II, III, aVF, V₃-V₆, without T-wave inversions. Also note concomitant PR-segment elevation in aVR and PR depression in the inferolateral leads.