

FIGURE 11-4 Prevalence of comorbidity by age group in persons ≥65 years old living in the United States and enrolled in Medicare parts A and B in 1999. (From JL Wolff et al: Arch Intern Med 162:2269, 2002.)

TABLE 11-1 BASIC AND INSTRUMENTAL ACTIVITIES OF DAILY LIVING

Basic Activities of Daily Living: Self-Care Tasks

- Personal hygiene
- Dressing and undressing
- Eating
- Transferring from bed to chair and back
- Voluntarily controlling urinary and fecal discharge
- Using the toilet
- Moving around (as opposed to being bedridden)

Instrumental Activities of Daily Living: Not Necessary for Fundamental Functioning, but Permit an Individual to Live Independently in a Community

- Doing light housework
- Preparing meals
- Taking medications
- Shopping for groceries or clothes
- Using the telephone
- Managing money
- Using technology^a

^aWith the recognition that older persons may not be that technologically savvy since they were not as extensively exposed to technology during their lifetime.)

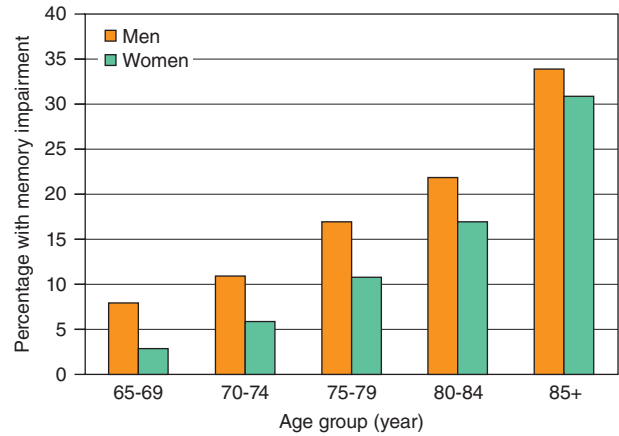


FIGURE 11-6 Rates of memory impairment in different age groups. The definition of “moderate or severe memory impairment” is 4 or fewer words recalled out of 20. (Source: Health and Retirement Survey. Accessed November 15, 2013, at aoa.gov/agingstatsdotnet/Main_Site/Data/2000_Documents/healthstatus.aspx.)

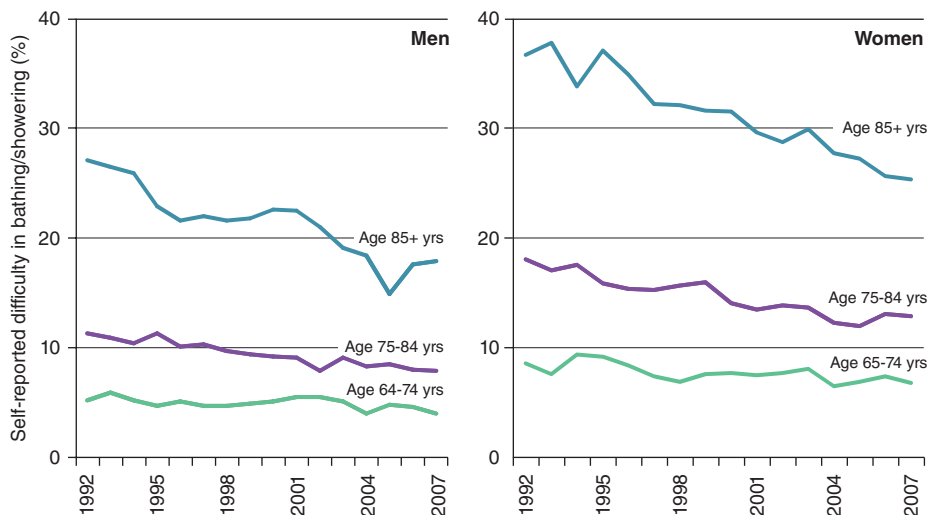


FIGURE 11-5 Self-reported prevalence of disability (severe difficulty) in bathing/showering between 1992 and 2007, according to age and sex. (From Medicare Current Beneficiary Survey 1992–2007.)