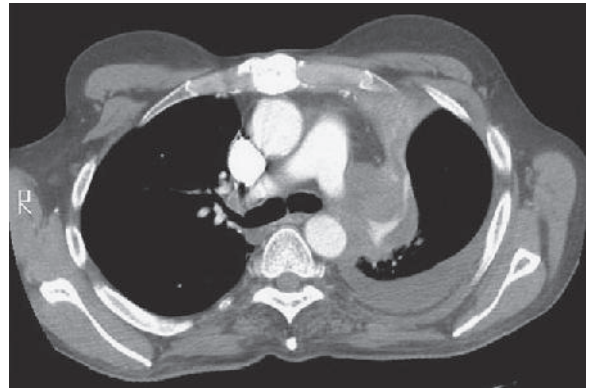


E-FIGURE 56-6 Central tumor of lung cancer (squamous cell tumor). Examples of centrally located primary lung cancer include squamous cell carcinoma of the lung and small cell lung carcinoma.



E-FIGURE 56-7 Malignant adenopathy in primary lung cancer. This patient has a small cell carcinoma with adenopathy and collapse of the left upper lobe.

