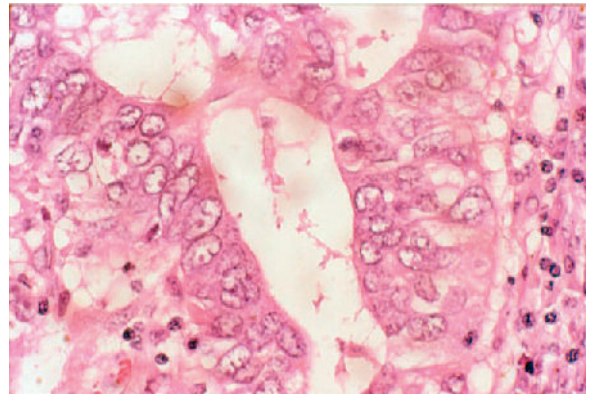
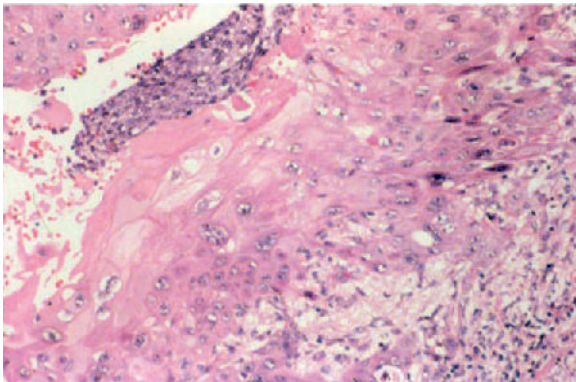


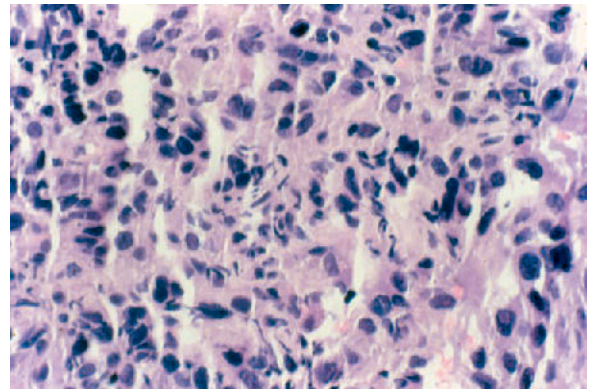
E-FIGURE 56-1 Small cell lung carcinoma.



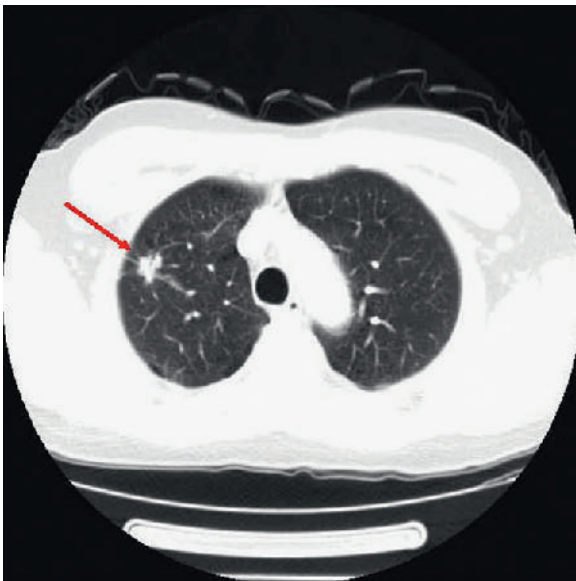
E-FIGURE 56-2 Adenocarcinoma of the lung.



E-FIGURE 56-3 Squamous cell carcinoma of the lung.



E-FIGURE 56-4 Large cell undifferentiated carcinoma of the lung.



E-FIGURE 56-5 Peripheral tumor of lung cancer (*arrow*). Peripherally located primary lung cancer most commonly occurs with adenocarcinoma of the lung, as shown here.