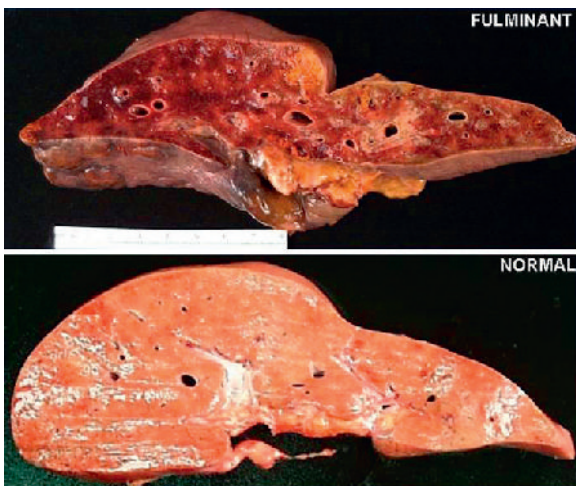


E-FIGURE 42-1 Etiology of acute liver failure (ALF) in the USA Adult Registry ($N = 2102$). APAP, Acetaminophen; Autoimmune, autoimmune hepatitis; Hep, hepatitis; Indeter, indeterminate cause. (Data from The Acute Liver Failure Study Group 1998-2013 [unpublished].)



E-FIGURE 42-2 Fulminant hepatic failure and normal liver. Relative to normal, the liver of a patient with fulminant hepatic failure shows a shrunken parenchyma, wrinkled capsule, and necrotic areas.