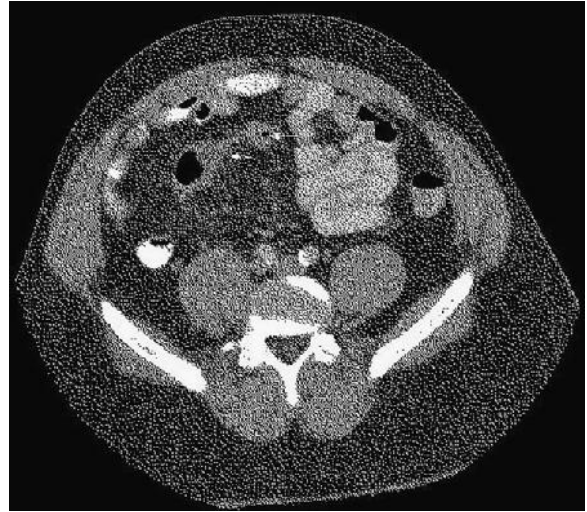
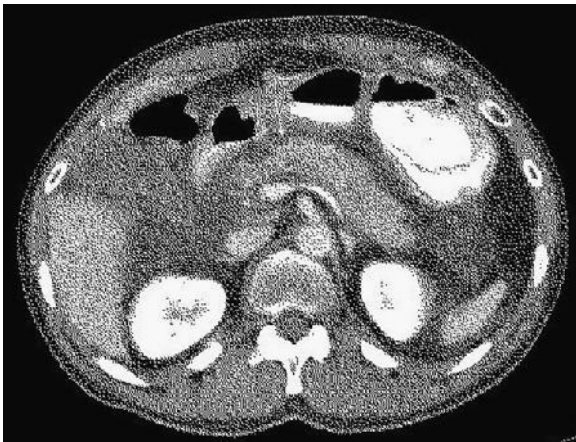


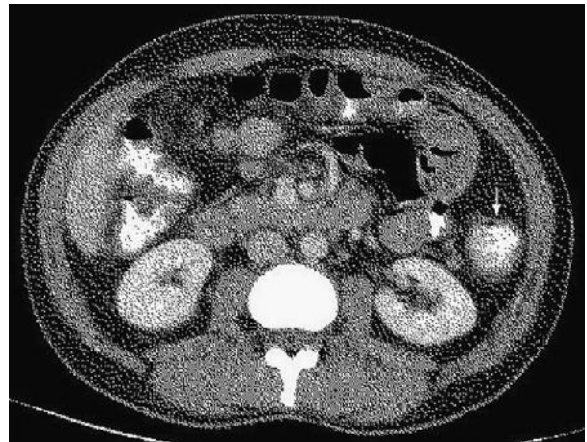
E-FIGURE 33-1 Computed tomographic image of acute appendicitis, with evidence of edema and surrounding fat stranding. (Courtesy Jorge Soto, MD, Boston University School of Medicine.)



E-FIGURE 33-2 Computed tomographic image of acute diverticulitis, with evidence of diverticula and surrounding fat stranding. (Courtesy Jorge Soto, MD, Boston University School of Medicine.)



E-FIGURE 33-3 Computed tomographic image of acute pancreatitis, with edema of the pancreas and surrounding fat stranding. (Courtesy Jorge Soto, MD, Boston University School of Medicine.)



E-FIGURE 33-4 Computed tomographic image of ulcerative colitis, with inflammation and edema of the descending colon. (Courtesy Jorge Soto, MD, Boston University School of Medicine.)

