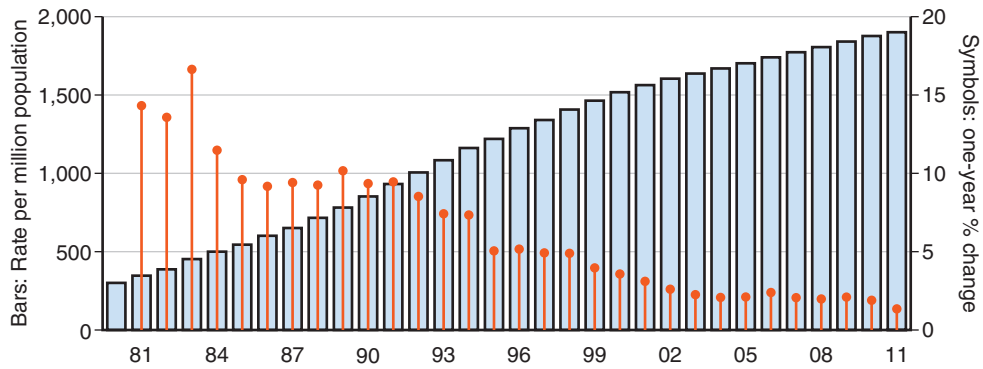


**E-FIGURE 32-1** Adjusted incidence rates of end-stage renal disease and annual percent change. (Data from U.S. Renal Data System: USRDS 2013 annual data report: atlas of chronic kidney disease and end-stage renal disease in the United States, Bethesda, Md., 2013, National Institutes of Health, National Institute of Diabetes and Digestive and Kidney Diseases.)



**E-FIGURE 32-2** Adjusted prevalence rates of end-stage renal disease and annual percent change. (Data from U.S. Renal Data System: USRDS 2013 annual data report: atlas of chronic kidney disease and end-stage renal disease in the United States, Bethesda, Md., 2013, National Institutes of Health, National Institute of Diabetes and Digestive and Kidney Diseases.)