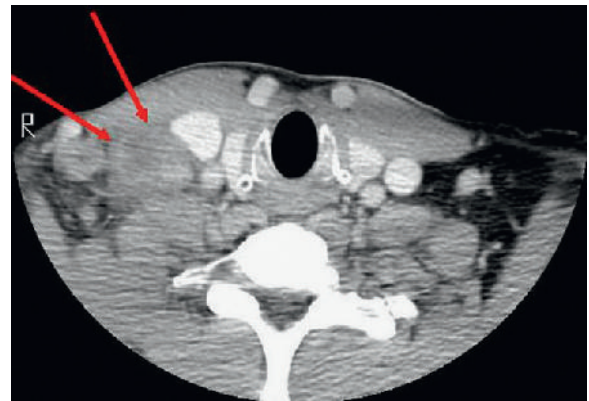
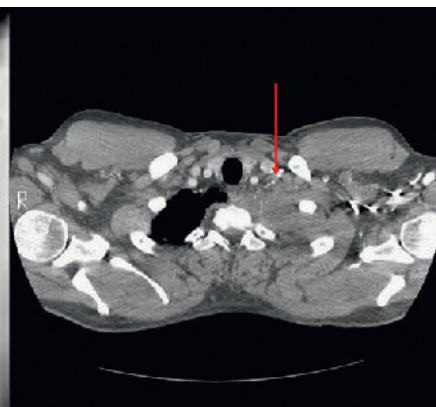
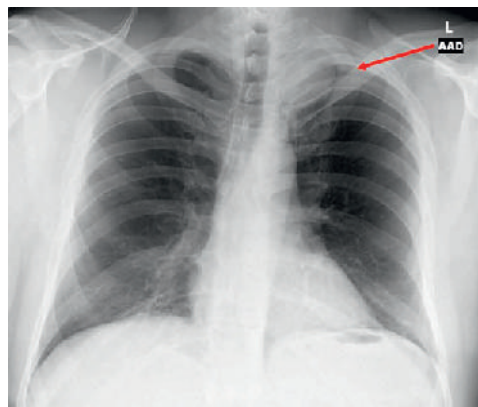


E-FIGURE 23-7 Postobstructive pneumonia.



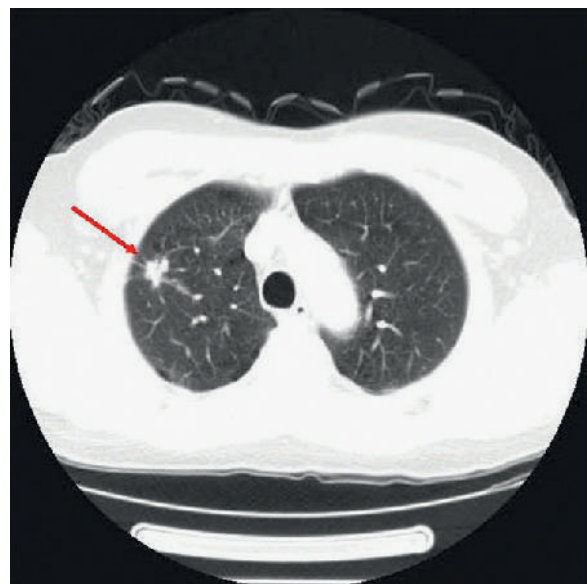
E-FIGURE 23-8 Enlarged supraclavicular lymph node (arrows).



E-FIGURE 23-9 Superior sulcus (i.e., Pancoast tumor) (arrows).



E-FIGURE 23-10 Central squamous cell tumor.



E-FIGURE 23-11 Peripheral adenocarcinoma (arrow).