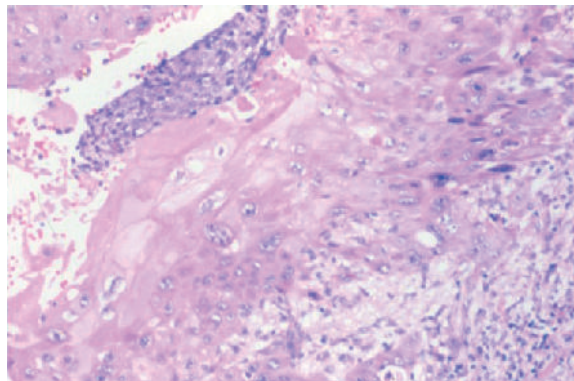
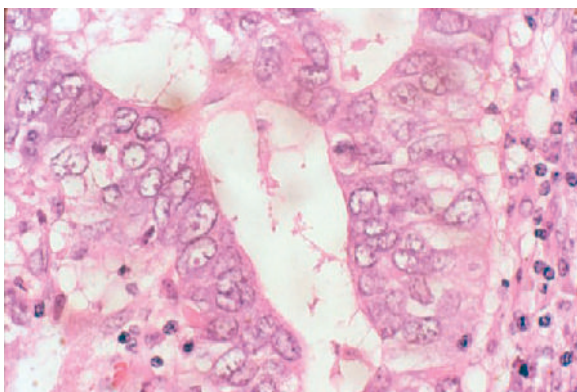


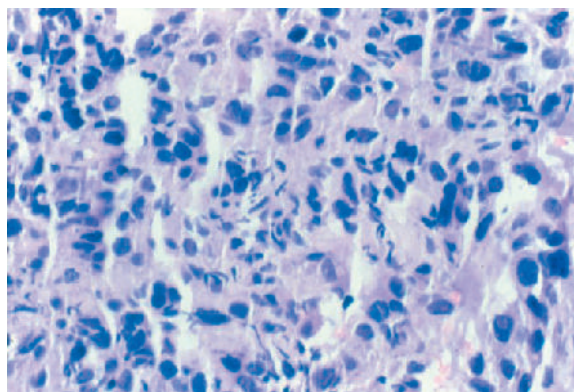
E-FIGURE 23-1 Small cell carcinoma.



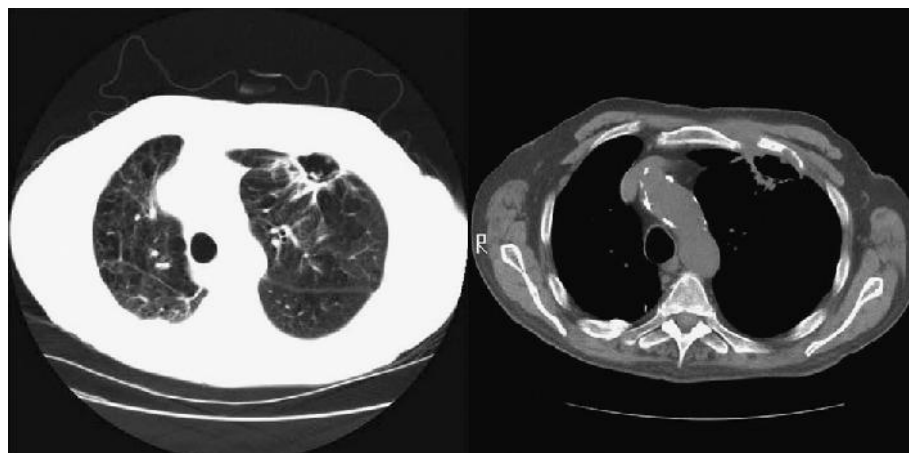
E-FIGURE 23-2 Squamous cell carcinoma.



E-FIGURE 23-3 Adenocarcinoma.



E-FIGURE 23-4 Large cell undifferentiated carcinoma.



E-FIGURE 23-5 Left upper lobe cavitary squamous cell carcinoma with chest wall invasion and rib destruction.