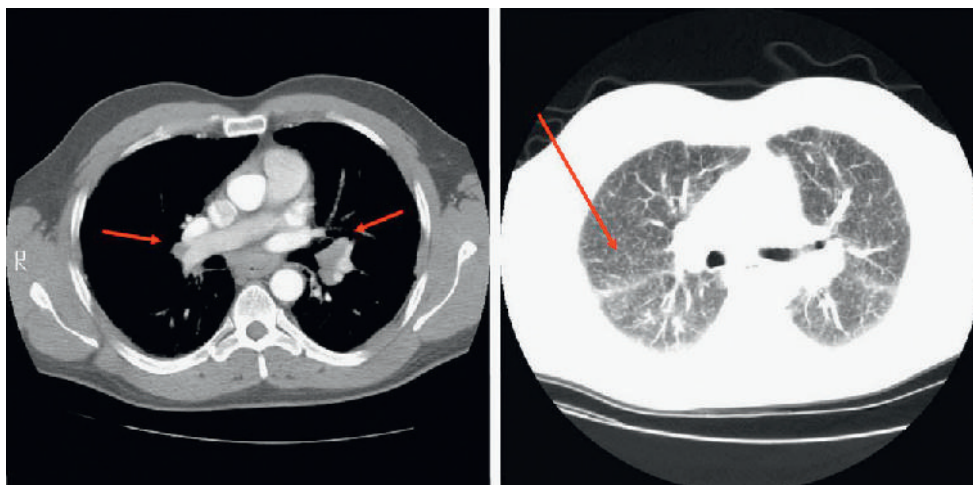


E-FIGURE 17-2 Hilar adenopathy in a patient with sarcoidosis (*arrows*). **A**, Chest radiograph. **B**, Chest computed tomography scan. (Courtesy Dr. Rafael L. Perez.)



E-FIGURE 17-3 Sarcoidosis with interstitial infiltrates.



E-FIGURE 17-4 Arrows indicating hilar adenopathy (*left*) and nodularity along the bronchovascular bundles (*right*) in a patient with sarcoidosis.