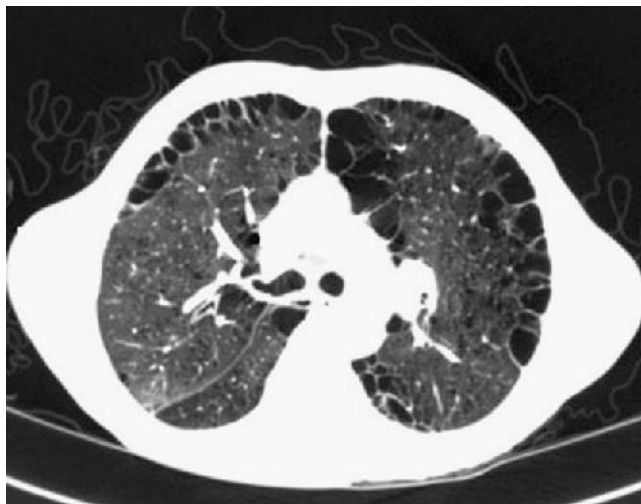


E-FIGURE 16-6 Anterior-posterior (*left*) and lateral (*right*) chest radiographs show changes caused by severe chronic obstructive pulmonary disease, including hyperinflation, increased anterior-posterior diameter, flattened diaphragms, and enlarged pulmonary arteries.



E-FIGURE 16-7 Computed tomographic scan shows paraseptal distribution of emphysema.