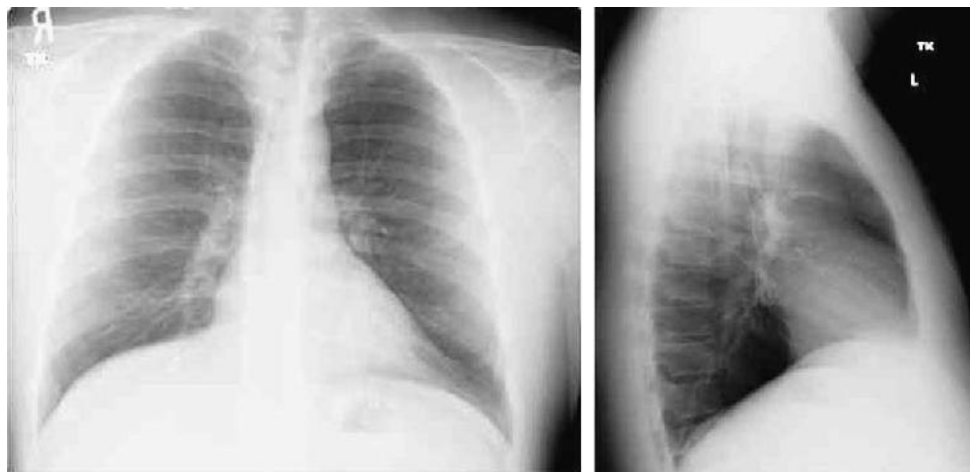


E-FIGURE 15-4 The flow diagram shows how pulmonary function tests can be used to evaluate patients with obstructive and restrictive disorders. COPD, Chronic obstructive pulmonary disease; DL_{CO}, diffusing capacity for carbon monoxide; FEV₁, forced expiratory volume in 1 second; FVC, forced vital capacity; ILD, interstitial lung disease; MVV, maximum voluntary ventilation; NIF, negative inspiratory force; TLC, total lung capacity.



E-FIGURE 15-5 Normal posteroanterior (left) and lateral (right) chest radiographs.